

---

---

# **DFCU ONLINE BUSINESS REMOTE DEPOSIT CAPTURE SETUP GUIDE**

---

---

## Table of Contents

Overview.....	2
Requirements .....	2
System Requirements.....	2
Supported Check Scanners .....	3
Check Scanner Setup .....	3
Downloading the Ranger Driver.....	3
Installing the Ranger Driver.....	5
Testing the Check Scanner Installation.....	5
Troubleshooting .....	6
Check Scanner Issue.....	6
Support.....	7
Technical Support.....	7

## Overview



DFCU OnLine Business Remote Deposit Capture is a secure online service that allows businesses to scan paper checks from your desktop and electronically deposit the images to your DFCU Financial business account within minutes\*. Make business account deposits 24/7 – no need to drive to a branch or put checks in the mail!

\*In most cases, checks will be posted immediately and the funds will be available according to our Funds Availability Disclosure Policy.

## Requirements

To use DFCU OnLine Business Remote Deposit Capture you must:

- Apply for this service – all business members, in good standing, are eligible.
- Have an active Business Checking, Business Interest Checking Plus or Business Savings account with DFCU Financial.
- Be an active DFCU OnLine user.

## System Requirements

To use DFCU OnLine Business Remote Deposit Capture you will need a properly installed, supported desktop check scanner connected to a supported PC.

System**	Requirement															
Operating System	Windows 7 or 8 (8.1)															
OS/Browser	<table border="1"> <thead> <tr> <th rowspan="2">Browser</th> <th colspan="3">OS</th> </tr> <tr> <th>Windows 7</th> <th>Windows 8</th> <th>Windows 8.1</th> </tr> </thead> <tbody> <tr> <td>IE10</td> <td>Yes</td> <td>Yes</td> <td>N/A</td> </tr> <tr> <td>IE11</td> <td>Yes</td> <td>N/A</td> <td>Yes</td> </tr> </tbody> </table>	Browser	OS			Windows 7	Windows 8	Windows 8.1	IE10	Yes	Yes	N/A	IE11	Yes	N/A	Yes
	Browser		OS													
		Windows 7	Windows 8	Windows 8.1												
	IE10	Yes	Yes	N/A												
IE11	Yes	N/A	Yes													
<p><b>i Critical:</b> DFCU OnLine Business Remote Deposit Capture is <b>only</b> supported on Internet Explorer.</p>																
Ram	Minimum 1 GB, recommended 2 GB.															
CPU	2.0 GHz or greater.															
Internet Connection	Broadband Internet connection – recommended 1.5Mbps or greater.															
Other	<ul style="list-style-type: none"> <li>• JavaScript and Active X <b>must</b> be allowable on the computer.</li> <li>• Pop-up blockers must be disabled or the site added as an exception.</li> </ul>															

\*\*Subject to change without notice.

## Supported Check Scanners

The following check scanners are supported by DFCU OnLine Business Remote Deposit:

- Canon CR-25
- Canon CR-50
- Canon CR-55
- Canon CR-80
- Canon CR-135i
- Canon CR-180
- Canon CR-190i
- Panini VisionX 1F
- Panini VisionX 50
- Panini VisionX 75
- Panini VisionX 100
- Digital Check Express CX30
- Digital Check Express TellerScan 240-50 NJ
- Digital Check Express TellerScan 240-75 NJ

**Note:** You can only have one check scanner set up on your PC. If you have a driver for another check scanner installed on your computer, a driver conflict will prevent the scanner from working. A driver for a document scanner may be installed on the same machine.

## Check Scanner Setup

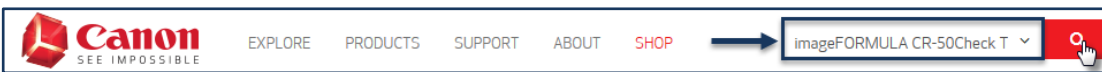
While you may have a CD that came with your check scanner that includes the Ranger Transport API, it is recommended that you download the latest driver directly from Canon's website.

**Critical:** Install the software before plugging in the scanner.

## Downloading the Ranger Driver

Take the following steps to download the Ranger Driver:

1. Navigate to <https://www.usa.canon.com>.
2. In the Search box on the right hand side of the screen, enter imageFORMULA CR-50Check Transport and click the Search button.

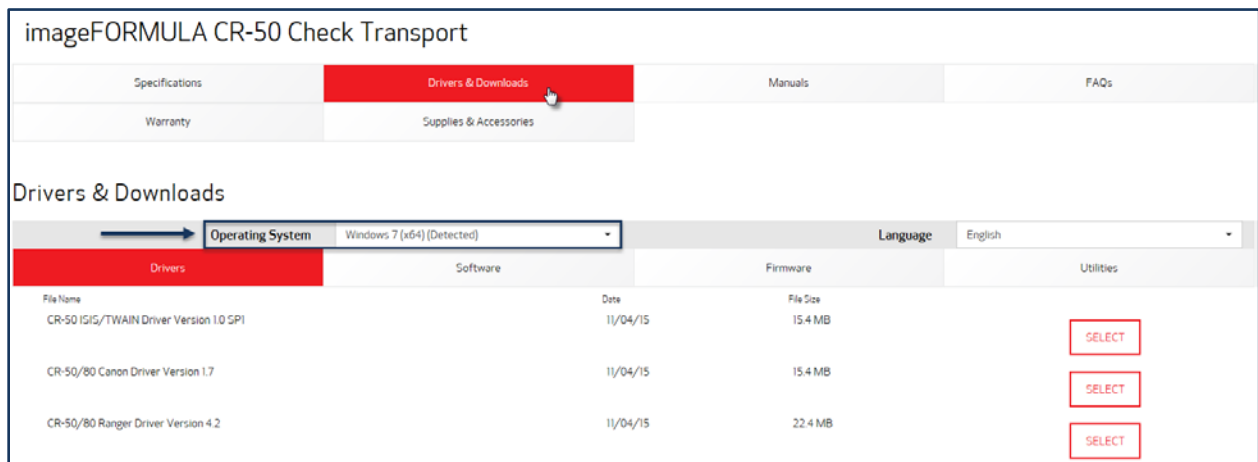


3. From the Matching Products, locate the imageFORMULA CR-50 Check Transport and click on the "Drivers & Download" link.

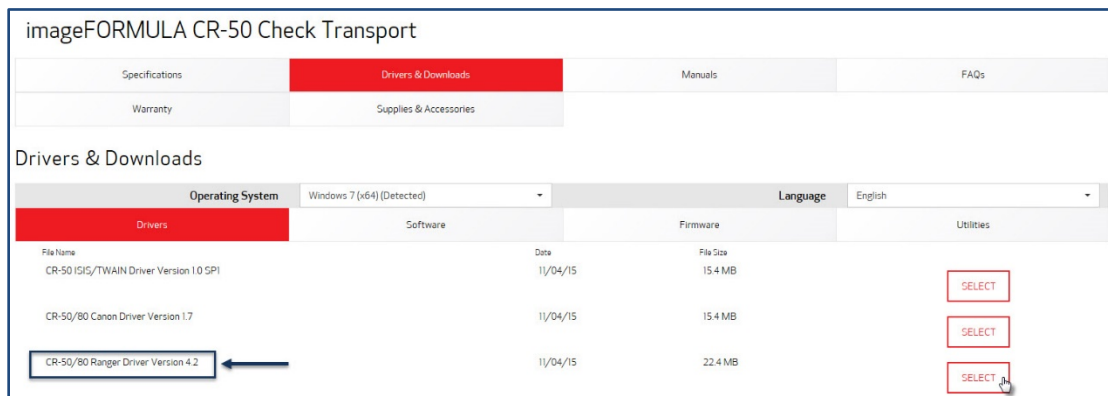


# DFCU ONLINE BUSINESS REMOTE DEPOSIT CAPTURE SETUP GUIDE

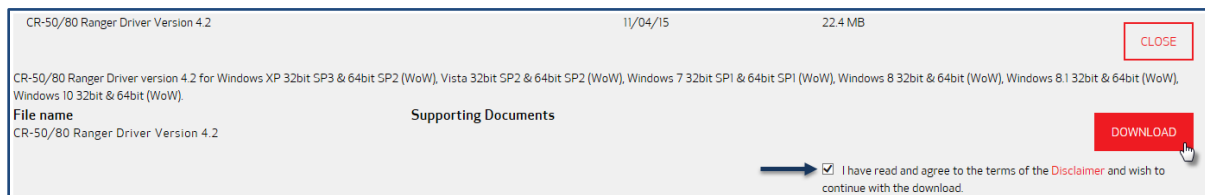
4. Scroll down and select Drivers & Downloads tab, the Operating System you are using will be detected. If this is not your Operating System, select the correct one from the dropdown menu.



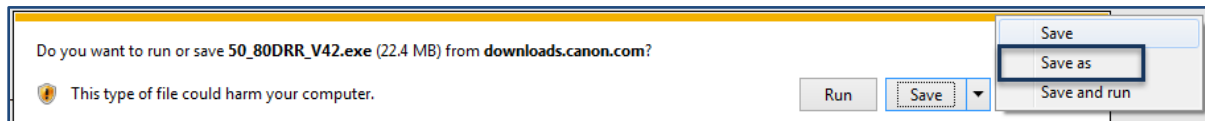
5. Click the Select button to expand the information for the CR-50/80 Ranger Driver Version 4.2.



6. Click the check box after you have read the Disclaimer to agree to the terms, then click Download. You will be prompted to save the driver.



7. Select Save As and choose a location on your computer to save the driver.

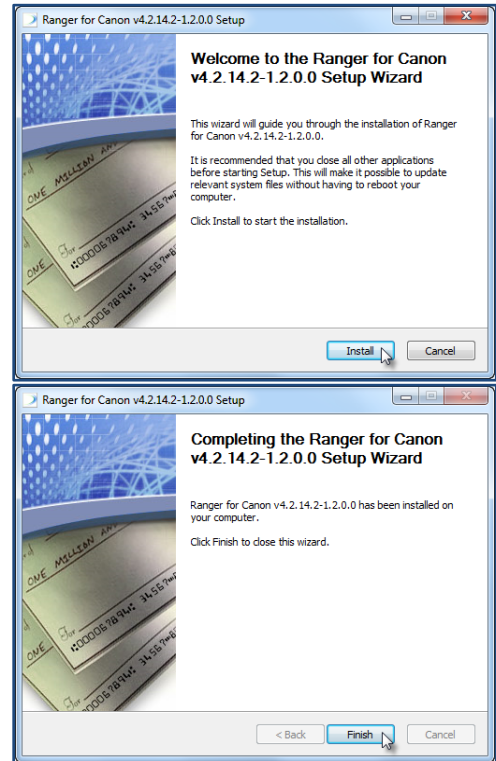


8. Continue to Installing the Ranger Driver.

## Installing the Ranger Driver

Take the following steps to install the Ranger Driver:

1. Double click on the install file that was previously downloaded and click Run/Yes, a dialog box will display.
2. Click the Install button, the Ranger driver will install.
3. Click Finish.



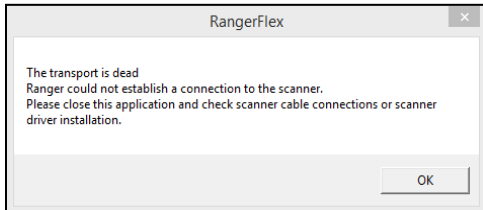
---

## Testing the Check Scanner Installation

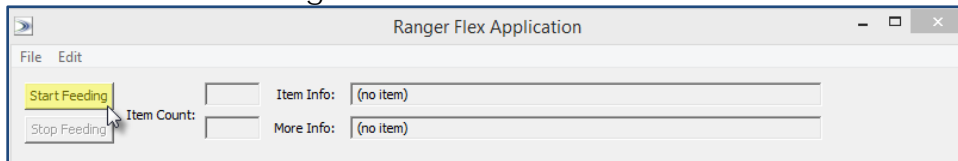
Prior to running Remote Deposit Capture within DFCU OnLine, you will want to test that the Ranger API and scanner driver installed correctly.

1. Plug the check scanner into a USB port of your computer.
2. Turn on the check scanner.
3. Prepare the checks for the scanner:
  - a. Prior to loading the checks into the check scanner, ensure that all checks are aligned on the end that goes into the scanner to reduce the chance of possible jams.
  - b. Align checks so that the bottom right corner of each check touch.
  - c. Depending on the scanner you are using, either pull the loading tray or unloading tray out and put the checks into place.
4. Open Windows File Explorer (right click the Start button and choose File Explorer) and Navigate to the following directory:
  - a. Windows 32-bit: C:\Program Files\Silver Bullet Technology\Ranger\Flex
  - b. Windows 64-bit: C:\Program Files (x86)\Silver Bullet Technology\Ranger\Flex

5. Locate and open RangerFlex.exe (used to test if the check scanner is working).
  - a. When you open the Ranger Flex Application, if you receive an error that indicates that “The transport is dead”, validate that the scanner is plugged into the computer and the power is turned on. If you continue to receive this message, see ‘Check Scanner Issue’ of this document.



- b. If there are no issues with the scanner, you can proceed with the test scan.
6. Click the Start Feeding button.



7. Once you have successfully scanned a check, click the Stop Feeding button and then close the application. The installation of the check scanner is complete.

✔ **Note:** Reboot your computer and continue to the DFCU OnLine Business Remote Deposit User Guide.

---

## Troubleshooting

### Check Scanner Issue

If your check scanner fails to work within the Ranger Flex Application, here are some items you will want to verify:

1. Validate USB Port on your computer. If your check scanner fails to work within the Ranger Flex Application, you may want to validate that the USB port that you have the check scanner plugged into is functioning by plugging in another USB device or try using another USB port.
2. Verify that the USB cable is fully plugged into the check scanner and into the USB port on the computer, the issue may be the USB cable itself. If you have a spare cable from another USB device that you know works, try using that cable instead.
3. Verify that the check scanner’s power cable is plugged in and the check scanner is turned on. There is a power switch on the back of the check scanner. If turned on, you should see the power light indicator turn on.

## Support

### Technical Support

If you have scanner, driver or any technical questions regarding your check scanner, please contact BLM Technologies. Representatives are available Monday through Friday 9:00 a.m. - 6:00 p.m. EST.

- Hardware/scanner related issues: 800.562.5271
- Driver installation: 800.334.5752